



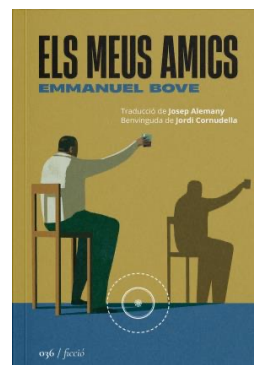
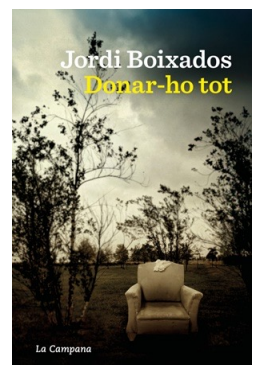
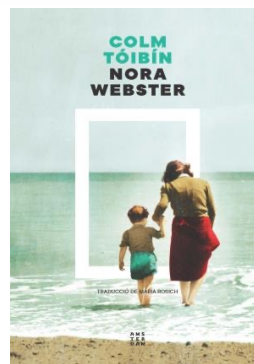
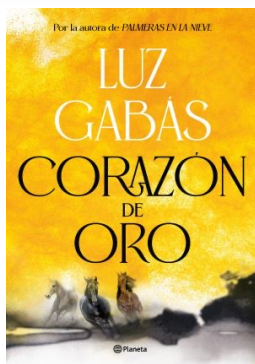
BIBLIOTECA ANTONI GAUDÍ

MARÇ 2026

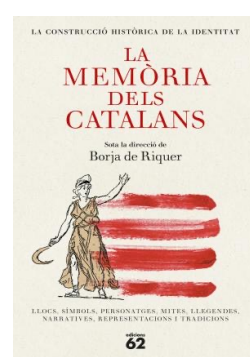
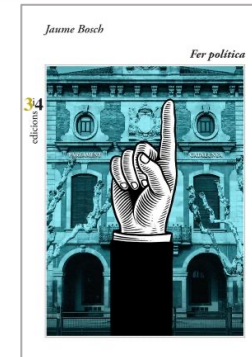
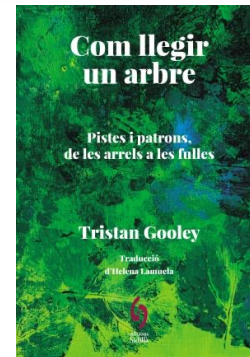
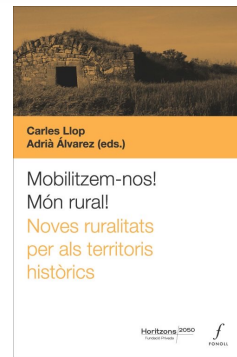
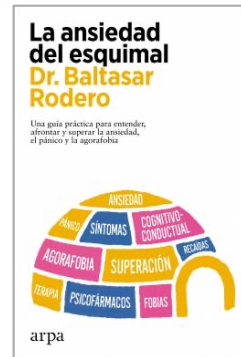
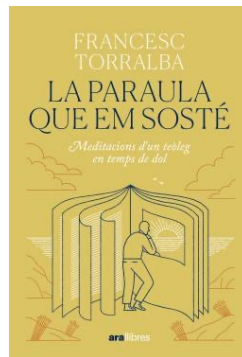
# BIBLIOGRAFIA DE NOVETATS



# FICCIÓ ADULTS



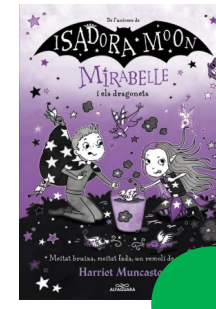
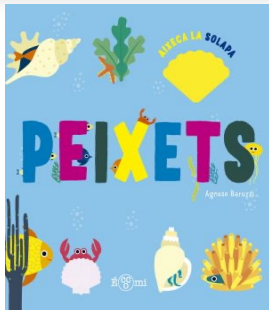
# NO FICCIÓ ADULTS



# FICCIÓ JUVENIL / MÓN JOVE

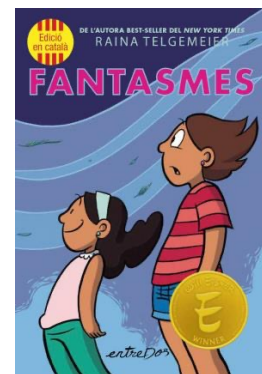
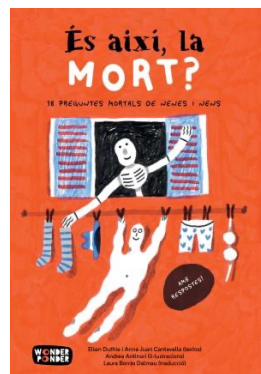
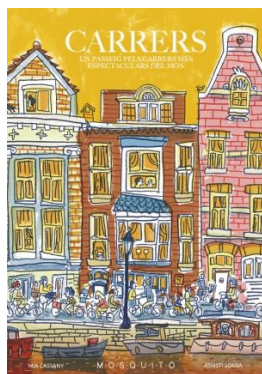


# IMAGINACIÓ INFANTIL



BEBETECA

# CONEIXEMENTS INFANTIL

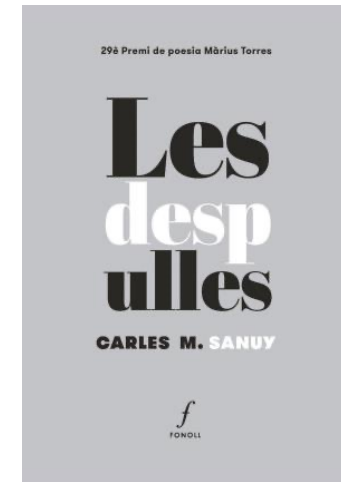


CÒMIC

# NOVEL·LA GRÀFICA / POESIA / TEATRE

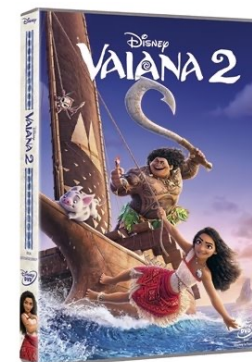
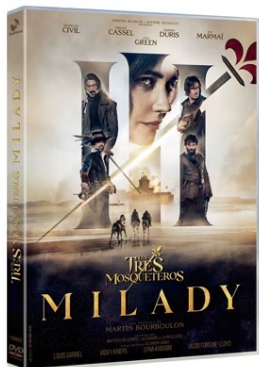


NOVEL·LA  
GRÀFICA



POESIA

# AUDIOVISUALS



INFANTIL

TROBARÀS AQUESTS LLIBRES I  
AUDIOVISUALS ALS MOBLES  
DE NOVETATS MENSUALS!

Biblioteca Antoni Gaudí  
Pl. de l'Arbre, 5 (Riudoms)  
<http://bibliotecaantonigaudi.cat>



Biblioteca Pública  
**Antoni Gaudí**



Amb el suport de



Generalitat de Catalunya  
**Departament de Cultura**